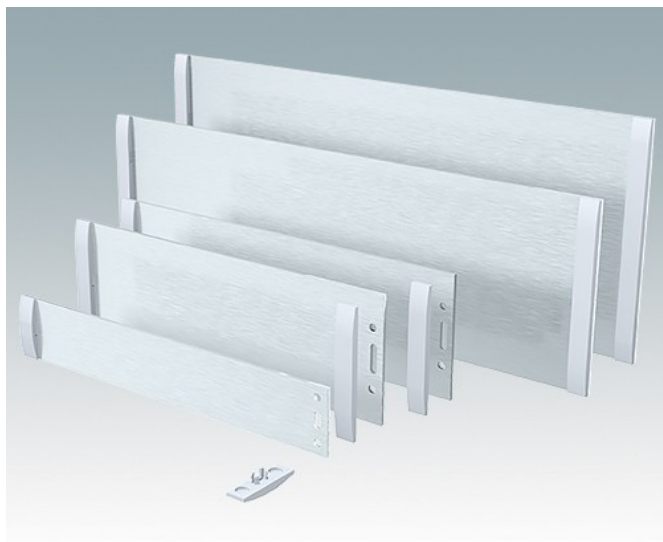
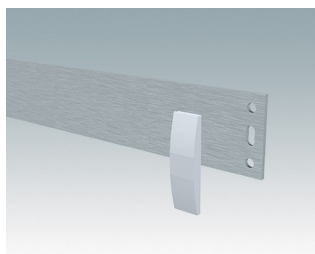


- Kits de plaque avant en aluminium anodisé pour boîtiers Unimet/Unimet-Plus.
- Disponibles en version entièrement personnalisée avec trous et impression numérique
- Bandes d'obturation de rechange
- Plaques avant et bandes d'obturation

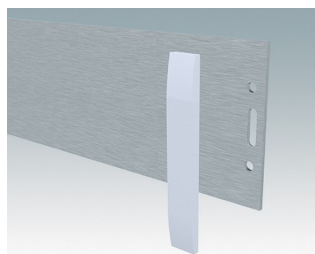
Commandez votre version entièrement personnalisée. [En savoir plus >>](#)



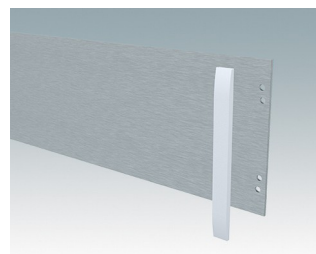
## Versions



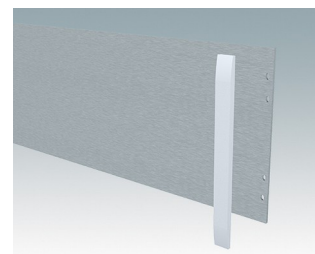
**M5700020**  
Bandes d'obturation 1/1H/1U  
ABS (UL 94 HB)  
Gris clair RAL 7035



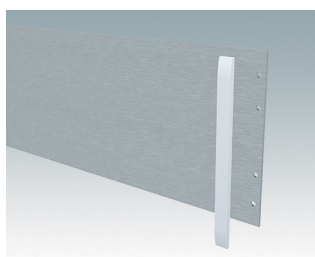
**M5700021**  
Bandes d'obturation  
2/2H/3/3H/2U  
ABS (UL 94 HB)  
Gris clair RAL 7035



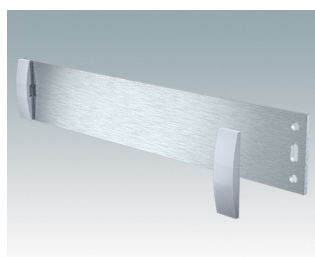
**M5700022**  
Bandes d'obturation 4/4H  
ABS (UL 94 HB)  
Gris clair RAL 7035



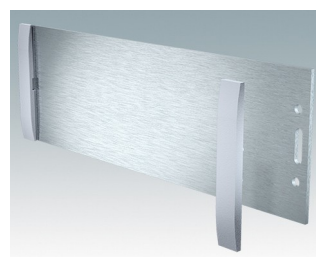
**M5700023**  
Bandes d'obturation 3U  
ABS (UL 94 HB)  
Gris clair RAL 7035



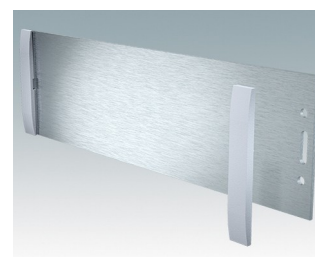
**M5700024**  
Bandes d'obturation 5/5H/6/6H  
ABS (UL 94 HB)  
Gris clair RAL 7035



**M5700607**  
Kit de plaque avant (1/1H)  
Aluminium  
Anodisé mat  
199,5x2x33,6mm

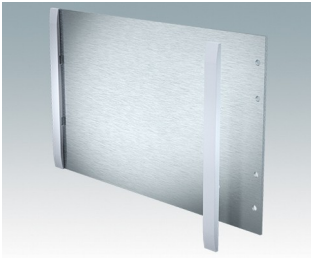


**M5700608**  
Kit de plaque avant (2/2H)  
Aluminium  
Anodisé mat  
199,5x2x65,1mm

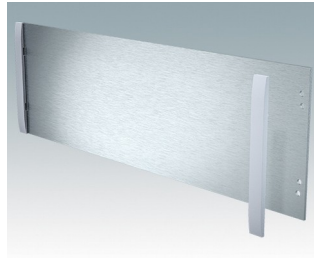


**M5700613**  
Kit de plaque avant (3/3H)  
Aluminium  
Anodisé mat  
219,5x2x65,1mm

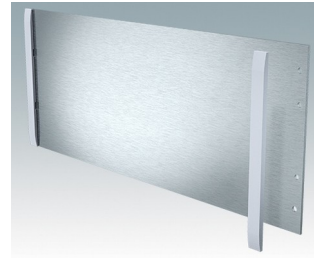
# KITS DE PLAQUE AVANT



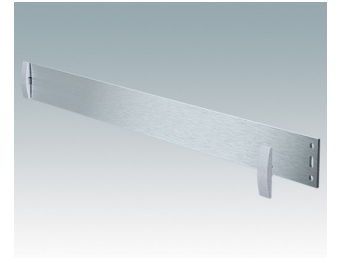
**M5700616**  
Kit de plaque avant (5/5H)  
Aluminium  
Anodisé mat  
219,5x2x130,1mm



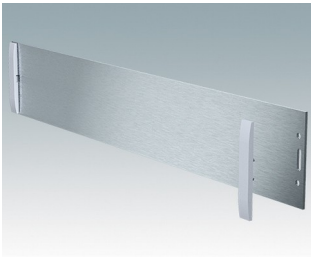
**M5700620**  
Kit de plaque avant (4/4H)  
Aluminium  
Anodisé mat  
319,5x2x100,1mm



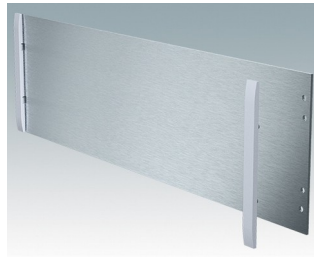
**M5700621**  
Kit de plaque avant (6/6H)  
Aluminium  
Anodisé mat  
319,5x2x130,1mm



**M5900010**  
Kit de plaque avant (1U)  
Aluminium  
Anodisé mat  
392,5x2x33,6mm



**M5900020**  
Kit de plaque avant (2U)  
Aluminium  
Anodisé mat  
392,5x2x67,1mm



**M5900030**  
Kit de plaque avant (3U)  
Aluminium  
Anodisé mat  
392,5x2x111mm

Sous réserve de modifications techniques. © OKW Enclosures Ltd