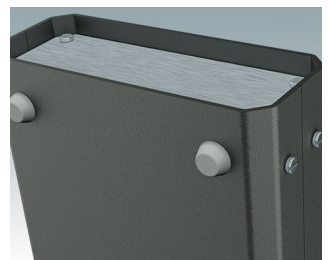
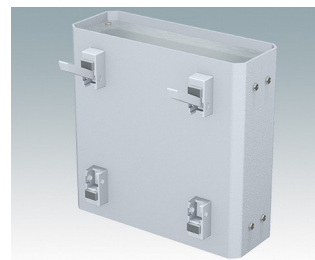
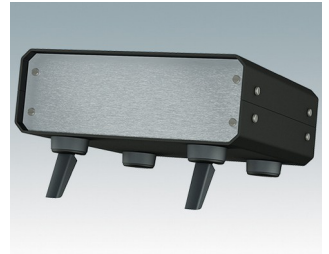
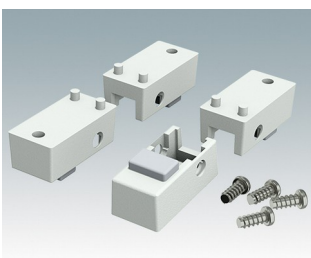


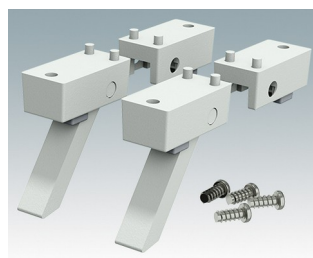
- Pieds universels pour boîtiers en métal ou plastique
- **Technofeet** - pieds ronds en plastique, élégants et modernes, basculables ou fixes
- **Pieds de boîtier** - robustes pieds en plastique basculables ou fixes
- Pieds en caoutchouc antiglisse et auto-adhésifs
- Pieds en caoutchouc antiglisse à insérer



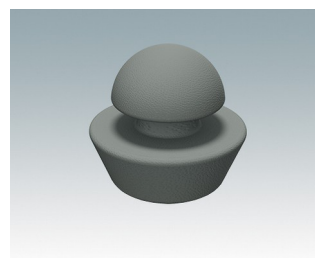
Versions



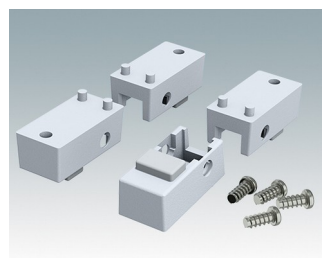
A9257107
Pieds du boîtier, kit 1
ABS (UL 94 HB)
Gris blanc RAL 9002
34x17x16mm



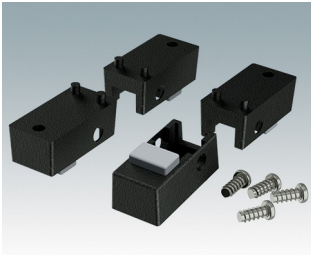
A9257207
Pieds du boîtier, kit 2
ABS (UL 94 HB)
Gris blanc RAL 9002
34x17x16mm



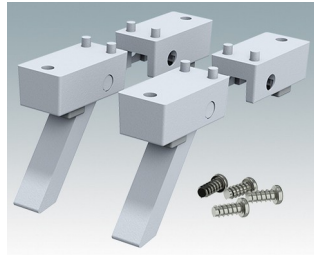
M5403002
Pied en caoutchouc
Caoutchouc
Gris
12,7x12,7x5mm



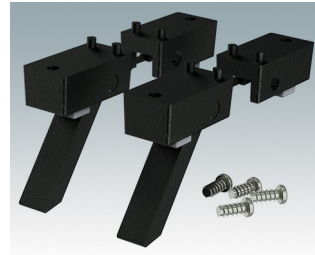
M5600015
Pieds du boîtier, kit 1
ABS (UL 94 HB)
Gris clair RAL 7035
34x17x16mm



M5600019
Pieds du boîtier, kit 1
ABS (UL 94 HB)
Noir RAL 9005
34x17x16mm



M5600045
Pieds du boîtier, kit 2
ABS (UL 94 HB)
Gris clair RAL 7035
34x17x16mm



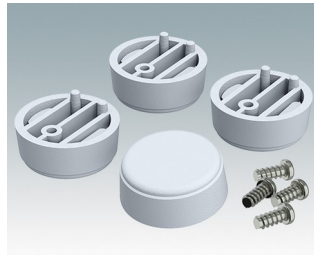
M5600049
Pieds du boîtier, kit 2
ABS (UL 94 HB)
Noir RAL 9005
34x17x16mm



M5600100
Pieds anti-glissant
Caoutchouc
Transparent
12,6x12,6x5,7mm



M6420104
Technofeet kit 1, pieds du boîtier
ABS (UL 94 HB)
Anthracite RAL 7016
30x30x12mm



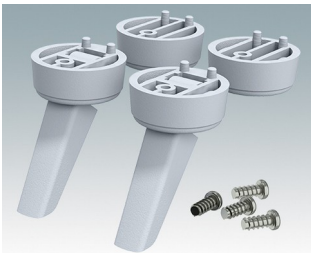
M6420105
Technofeet kit 1, pieds du boîtier
ABS (UL 94 HB)
Gris clair RAL 7035
30x30x12mm



M6420109
Technofeet kit 1, pieds du boîtier
ABS (UL 94 HB)
Noir RAL 9005
30x30x12mm



M6420204
Technofeet kit 2, pieds du boîtier
ABS (UL 94 HB)
Anthracite RAL 7016
30x30x12mm



M6420205
Technofeet kit 2, pieds du boîtier
ABS (UL 94 HB)
Gris clair RAL 7035
30x30x12mm



M6420209
Technofeet kit 2, pieds du boîtier
ABS (UL 94 HB)
Noir RAL 9005
30x30x12mm

Sous réserve de modifications techniques. © OKW Enclosures Ltd