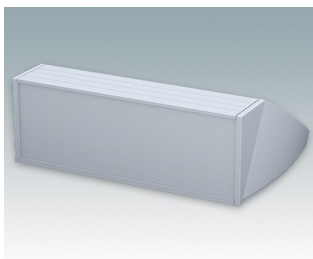
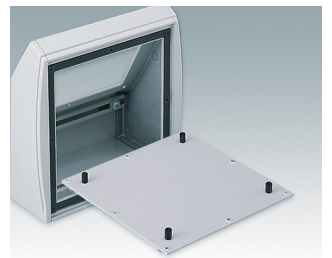
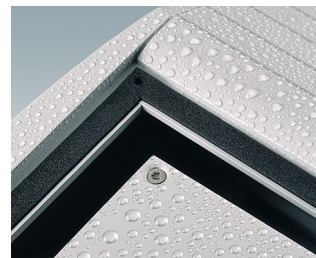
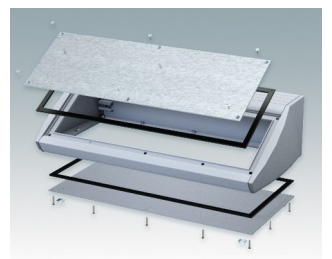
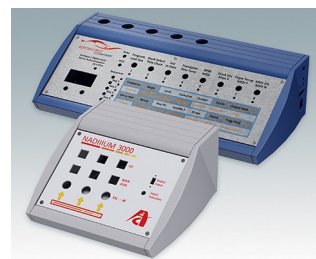


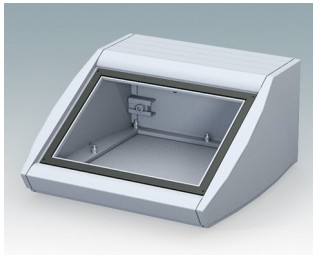
## Boitiers pupitres de terminal

- Boitiers pour instruments ergonomiques en aluminium pour applications de table et murales
- Design très robuste décliné en trois tailles et deux coloris standard, gris clair et noir
- Modèles IP 54 en option (testés par VDE) avec joints pour les panneaux avant et de base
- Corps de boîtier en aluminium pré-assemblé avec plaque arrière pour montage de connecteurs etc.
- Fixations M3 Torx® T10 en acier inoxydable et MS M3 Pozidriv fournies
- Quatre pieds en caoutchouc antiglisse compris
- La plaque avant accessoire est encastrée pour accepter un clavier à membrane
- Points de fixation de carte pré-perçés dans la plaque inférieure
- Pour la protection IP 54, des inserts de montage de circuits imprimés (accessoire) sont requis
- Kit de montage mural accessoire.

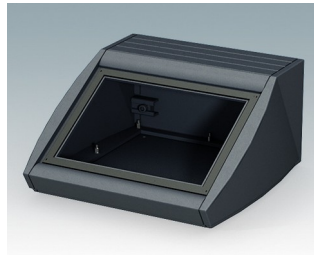
Commandez votre version entièrement personnalisée. [En savoir plus >>](#)



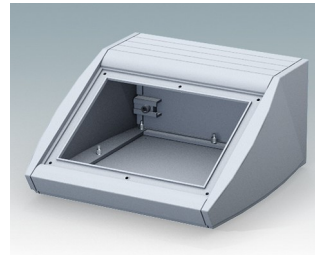
## Versions



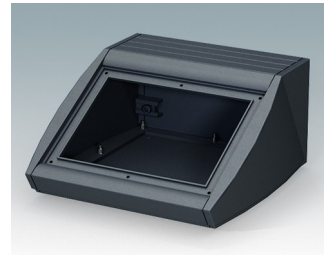
**M5320105**  
UNIDESK M200 IP 54  
Aluminium  
Gris clair RAL 7035  
200x200x102mm  
IP 54



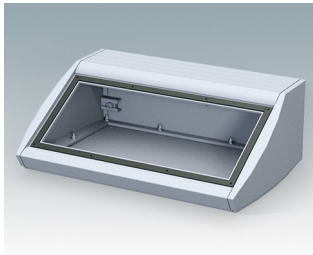
**M5320109**  
UNIDESK M200 IP 54  
Aluminium  
Noir RAL 9005  
200x200x102mm  
IP 54



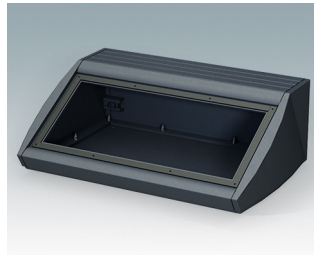
**M5320115**  
UNIDESK M200  
Aluminium  
Gris clair RAL 7035  
200x200x102mm



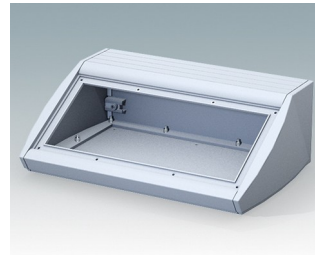
**M5320119**  
UNIDESK M200  
Aluminium  
Noir RAL 9005  
200x200x102mm



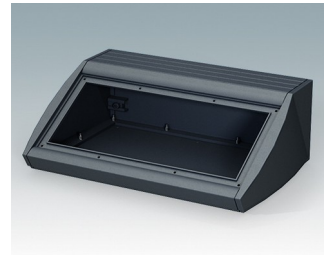
**M5330105**  
UNIDESK M300 IP 54  
Aluminium  
Gris clair RAL 7035  
300x200x102mm  
IP 54



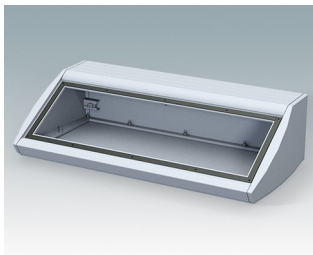
**M5330109**  
UNIDESK M300 IP 54  
Aluminium  
Noir RAL 9005  
300x200x102mm  
IP 54



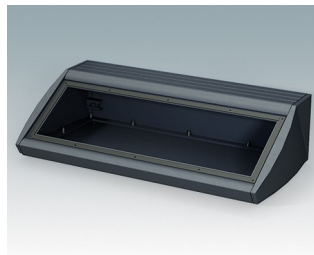
**M5330115**  
UNIDESK M300  
Aluminium  
Gris clair RAL 7035  
300x200x102mm



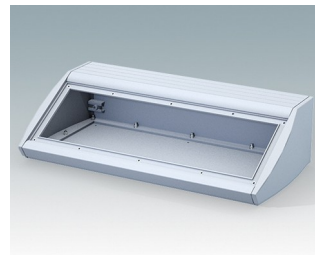
**M5330119**  
UNIDESK M300  
Aluminium  
Noir RAL 9005  
300x200x102mm



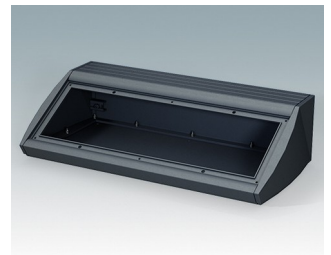
**M5340105**  
UNIDESK M400 IP 54  
Aluminium  
Gris clair RAL 7035  
400x200x102mm  
IP 54



**M5340109**  
UNIDESK M400 IP 54  
Aluminium  
Noir RAL 9005  
400x200x102mm  
IP 54

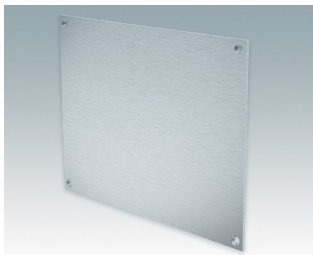


**M5340115**  
UNIDESK M400  
Aluminium  
Gris clair RAL 7035  
400x200x102mm

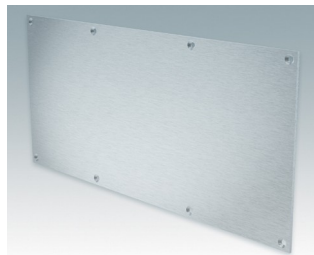


**M5340119**  
UNIDESK M400  
Aluminium  
Noir RAL 9005  
400x200x102mm

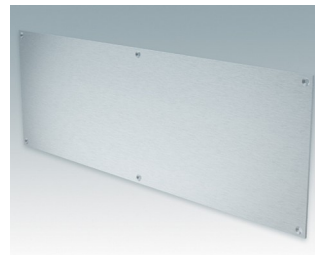
## Accessoires



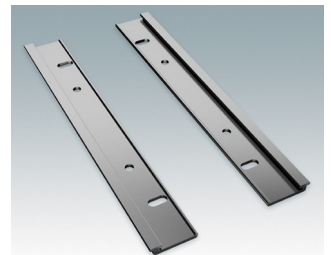
**M5301502**  
Plaque avant M200  
Aluminium  
Anodisé mat  
170x2x123mm



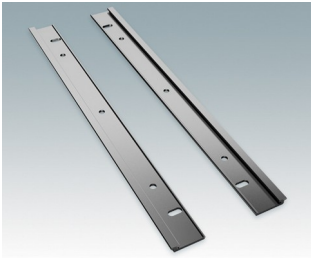
**M5301503**  
Plaque avant M300  
Aluminium  
Anodisé mat  
270x2x123mm



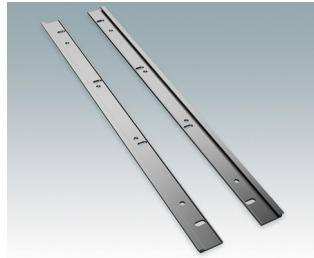
**M5301504**  
Plaque avant M400  
Aluminium  
Anodisé mat  
370x2x123mm



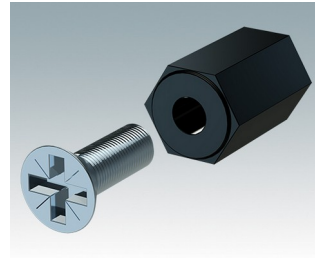
**M5302212**  
Jeu de support mural M200  
Aluminium  
Anodisé mat



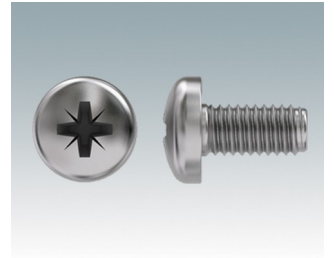
**M5302213**  
Jeu de support mural M300  
Aluminium  
Anodisé mat



**M5302214**  
Jeu de support mural M400  
Aluminium  
Anodisé mat



**M5600001**  
Jeu pour montage des circuits  
imprimés  
PA 6  
Noir RAL 9005



**M5600010**  
Vis de fixation du circuit imprimé,  
M3  
Acier  
Zingué  
6mm

Sous réserve de modifications techniques. © OKW Enclosures Ltd