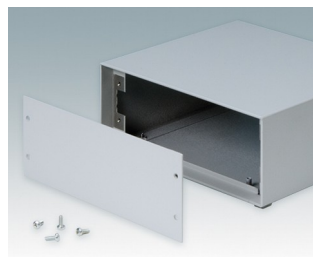
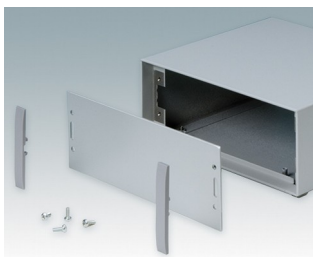
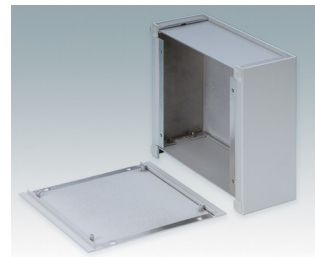
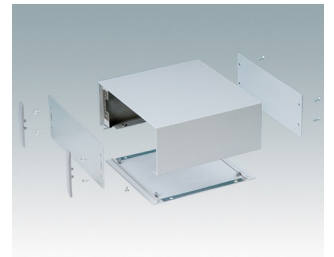
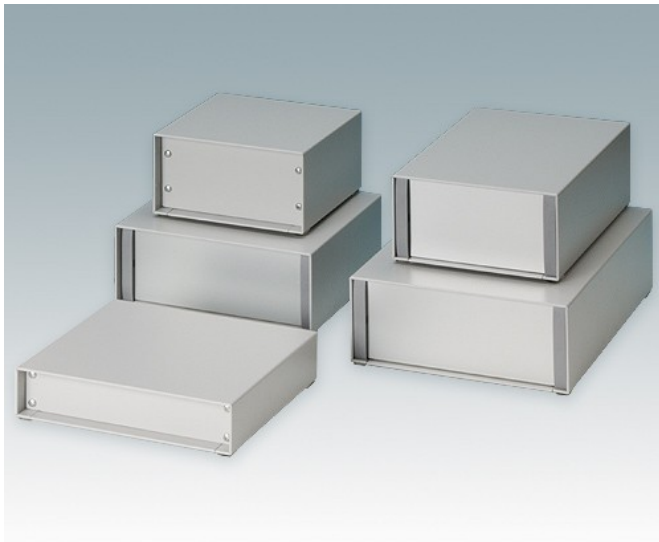


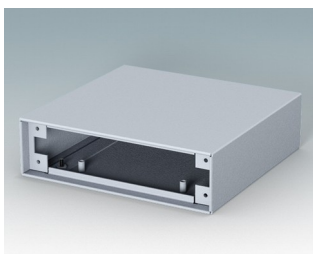
Pour petits équipements électroniques de table et portables

- Boîtiers pour instruments compacts en aluminium en huit tailles standard
- Design élégant, léger et polyvalent, technique d'assemblage simple et rapide
- Plaque inférieure amovible pré-équipée de quatre inserts de montage M3 pour cartes
- Accessoires: plaques avant et arrière en aluminium anodisé et plaques avant et arrière peintes
- Plaques avant encastrées de 8 mm ou 14 mm
- Quatre pieds antiglisse auto-adhésifs inclus

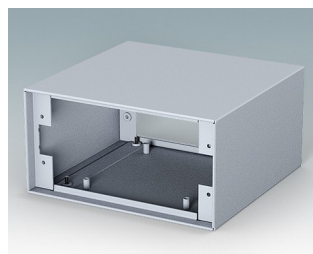
Commandez votre version entièrement personnalisée. [En savoir plus >>](#)



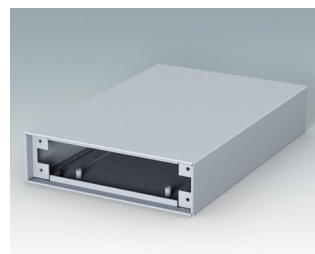
Versions



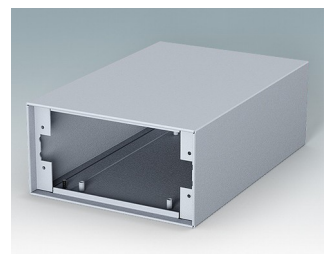
M5113115
MINIMET 1
Aluminium
Gris clair RAL 7035
134,5x130x38,5mm



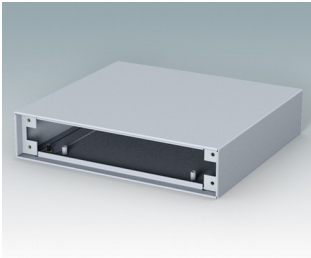
M5113125
MINIMET 2
Aluminium
Gris clair RAL 7035
134,5x130x70mm



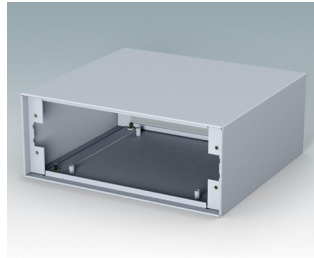
M5113215
MINIMET 3
Aluminium
Gris clair RAL 7035
134,5x200x38,5mm



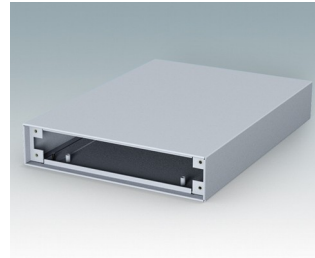
M5113225
MINIMET 4
Aluminium
Gris clair RAL 7035
134,5x200x70mm



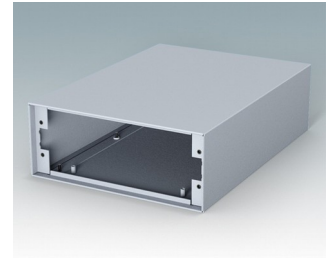
M5117115
MINIMET 5
Aluminium
Gris clair RAL 7035
174,5x160x38,5mm



M5117125
MINIMET 6
Aluminium
Gris clair RAL 7035
174,5x160x70mm

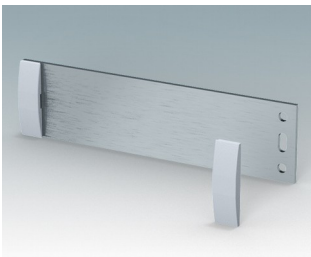


M5117215
MINIMET 7
Aluminium
Gris clair RAL 7035
174,5x240x38,5mm

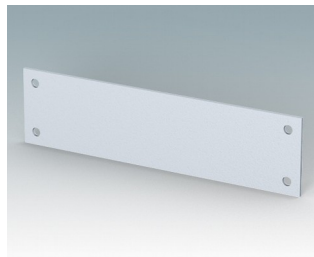


M5117225
MINIMET 8
Aluminium
Gris clair RAL 7035
174,5x240x70mm

Accessoires



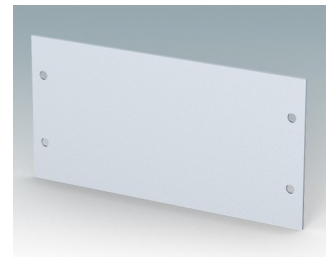
M5100510
Kit de plaque avant/arrière AN
(taille 1 et 3)
Aluminium
Anodisé mat
129,5x2x33,6mm



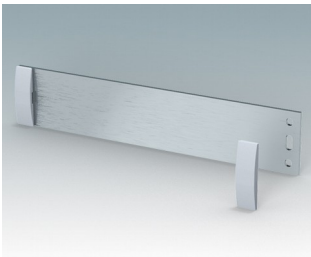
M5100515
Plaque avant/arrière PN (taille 1
et 3)
Aluminium
Gris clair RAL 7035
129,5x1,5x33,6mm



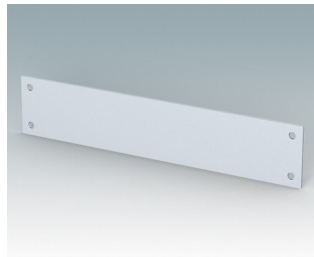
M5100520
Kit de plaque avant/arrière AN
(taille 2 et 4)
Aluminium
Anodisé mat
129,5x2x65,1mm



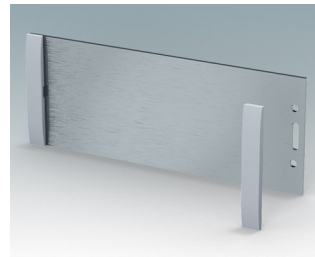
M5100525
Plaque avant/arrière PN (taille 2
et 4)
Aluminium
Gris clair RAL 7035
129,5x1,5x65,1mm



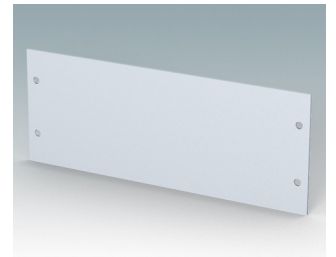
M5100550
Kit de plaque avant/arrière AN
(taille 5 et 7)
Aluminium
Anodisé mat
169,5x2x33,6mm



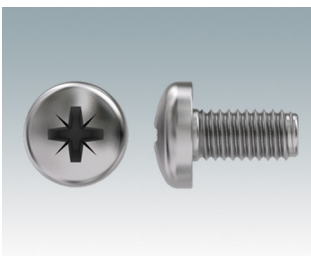
M5100555
Plaque avant/arrière PN (taille 5
et 7)
Aluminium
Gris clair RAL 7035
169,5x1,5x33,6mm



M5100560
Kit de plaque avant/arrière AN
(taille 6 et 8)
Aluminium
Anodisé mat
169,5x2x65,1mm



M5100565
Plaque avant/arrière PN (taille 6
et 8)
Aluminium
Gris clair RAL 7035
169,5x1,5x65,1mm



M5600010
Vis de fixation du circuit imprimé,
M3
Acier
Zingué
6mm