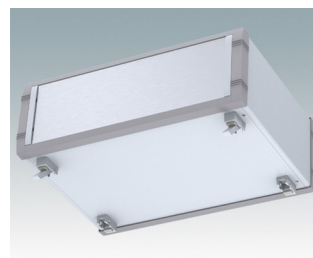
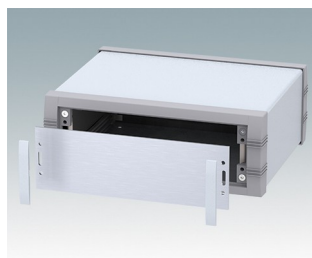
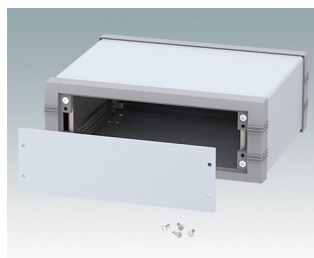
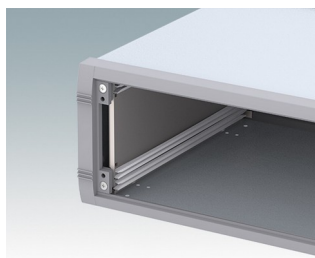
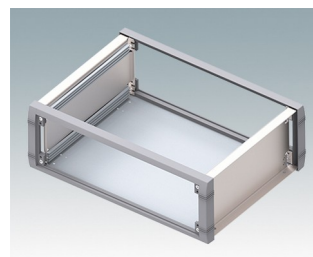
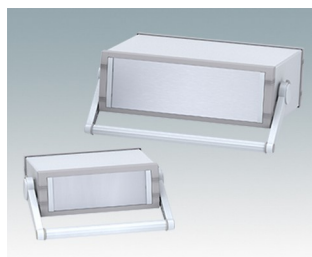
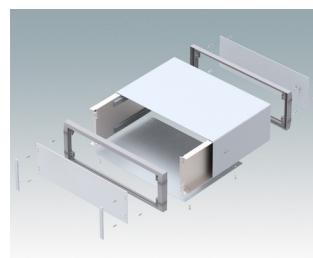
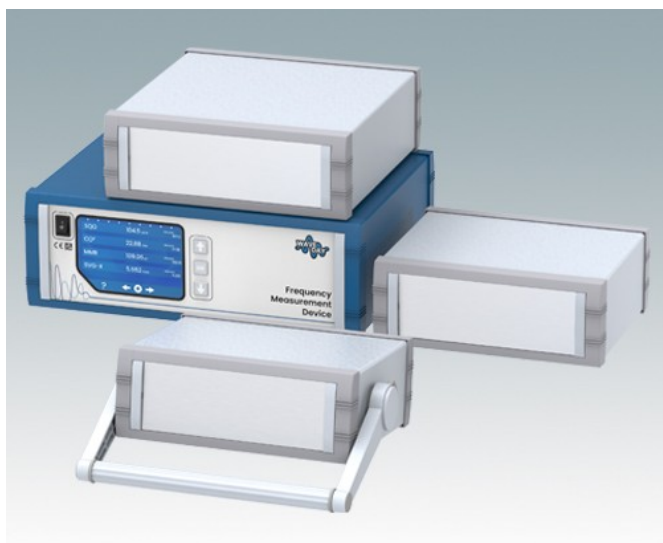


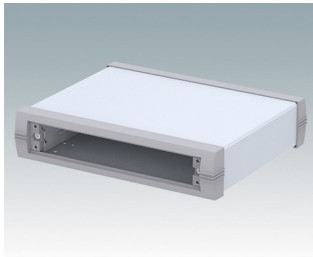
Boitiers pour instruments élégants et polyvalents

- Boitiers pour instruments modernes en aluminium avec ou sans poignée étrier basculable/pivotante
- Design robuste et polyvalent en six tailles
- Châssis interne avec positions de guides horizontales insertion de cartes
- Quatre guide-cartes en polyamide compris
- Élégants cadres frontal et arrière moulés sous pression fixés au corps de boîtier en aluminium plié
- Plaque arrière amovible encastrée pour protéger connecteurs, commutateurs, etc.
- Plaques avant en aluminium encastrée (accessoire)
- Quatre pieds en caoutchouc antiglisse compris
- Pieds basculables moulés disponibles en accessoire

Commandez votre version entièrement personnalisée. [En savoir plus >>](#)



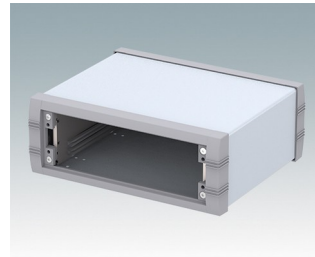
Versions



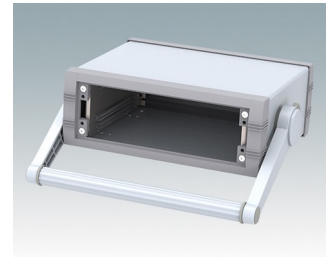
M5623015
UNIMET-PLUS 1
Aluminium
Gris clair/gris fenêtre RAL
7035/7040
230x193x50mm



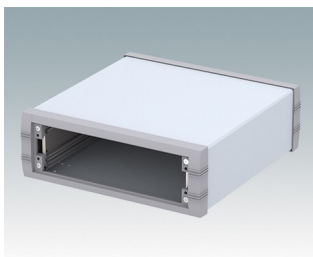
M5623035
UNIMET-PLUS 1H
Aluminium
Gris clair/gris fenêtre RAL
7035/7040
230x193x50mm



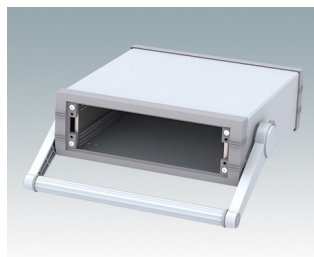
M5623115
UNIMET-PLUS 2
Aluminium
Gris clair/gris fenêtre RAL
7035/7040
230x193x85mm



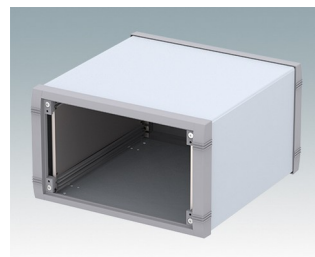
M5623135
UNIMET-PLUS 2H
Aluminium
Gris clair/gris fenêtre RAL
7035/7040
230x193x85mm



M5625115
UNIMET-PLUS 3
Aluminium
Gris clair/gris fenêtre RAL
7035/7040
250x263x85mm



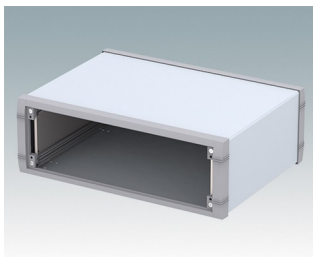
M5625135
UNIMET-PLUS 3H
Aluminium
Gris clair/gris fenêtre RAL
7035/7040
250x263x85mm



M5625315
UNIMET-PLUS 5
Aluminium
Gris clair/gris fenêtre RAL
7035/7040
250x263x150mm



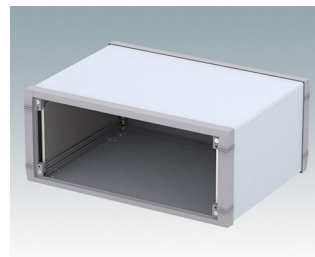
M5625335
UNIMET-PLUS 5H
Aluminium
Gris clair/gris fenêtre RAL
7035/7040
250x263x150mm



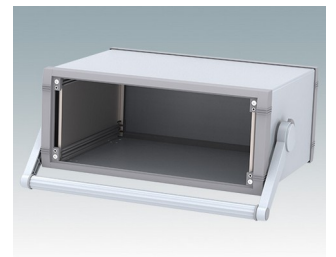
M5635215
UNIMET-PLUS 4
Aluminium
Gris clair/gris fenêtre RAL
7035/7040
350x263x120mm



M5635235
UNIMET-PLUS 4H
Aluminium
Gris clair/gris fenêtre RAL
7035/7040
350x263x120mm

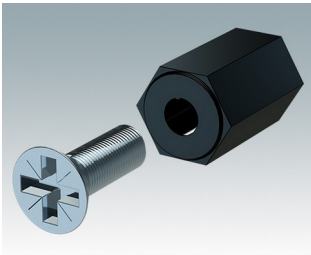


M5635315
UNIMET-PLUS 6
Aluminium
Gris clair/gris fenêtre RAL
7035/7040
350x263x150mm

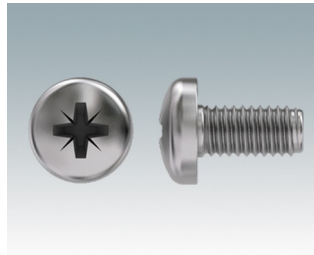


M5635335
UNIMET-PLUS 6H
Aluminium
Gris clair/gris fenêtre RAL
7035/7040
350x263x150mm

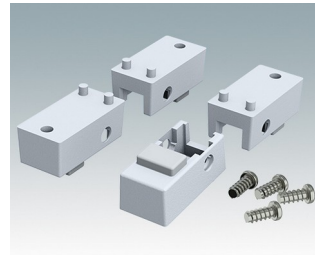
Accessoires



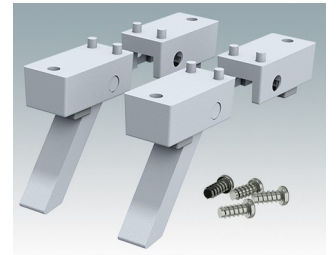
M5600001
Jeu pour montage des circuits imprimés
PA 6
Noir RAL 9005



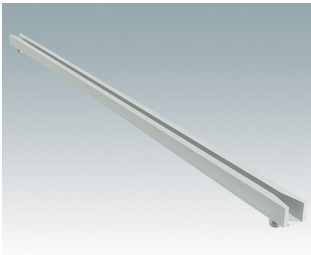
M5600010
Vis de fixation du circuit imprimé, M3
Acier
Zingué
6mm



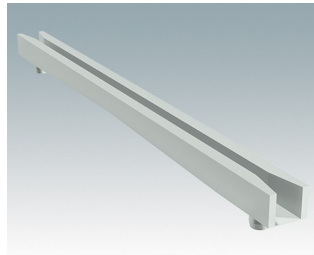
M5600015
Pieds du boîtier, kit 1
ABS (UL 94 HB)
Gris clair RAL 7035
34x17x16mm



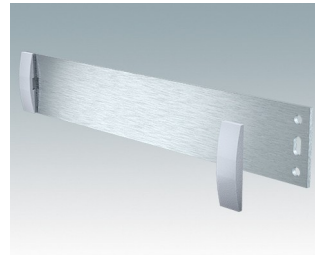
M5600045
Pieds du boîtier, kit 2
ABS (UL 94 HB)
Gris clair RAL 7035
34x17x16mm



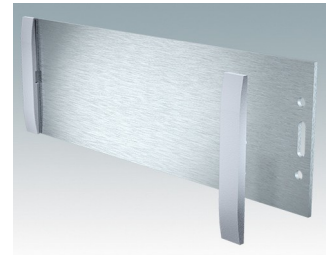
M5700202
Guide-carte, 216mm
PA 6/6 (UL 94 V-2)
Blanc



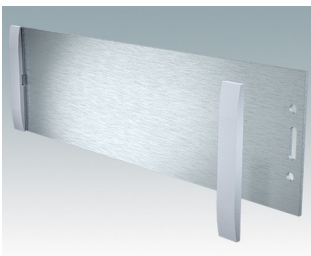
M5700203
Guide-carte, 102mm
PA 6/6 (UL 94 V-2)
Blanc



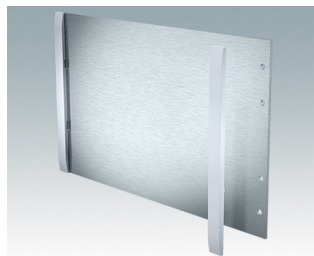
M5700607
Kit de plaque avant (1/1H)
Aluminium
Anodisé mat
199,5x2x33,6mm



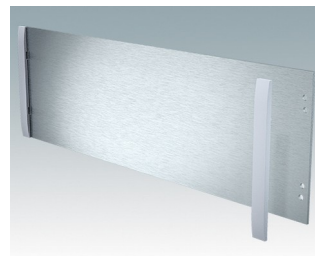
M5700608
Kit de plaque avant (2/2H)
Aluminium
Anodisé mat
199,5x2x65,1mm



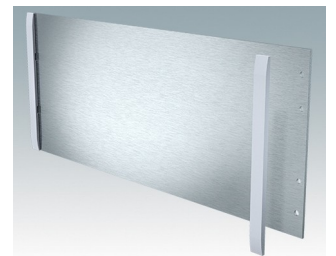
M5700613
Kit de plaque avant (3/3H)
Aluminium
Anodisé mat
219,5x2x65,1mm



M5700616
Kit de plaque avant (5/5H)
Aluminium
Anodisé mat
219,5x2x130,1mm



M5700620
Kit de plaque avant (4/4H)
Aluminium
Anodisé mat
319,5x2x100,1mm



M5700621
Kit de plaque avant (6/6H)
Aluminium
Anodisé mat
319,5x2x130,1mm

Sous réserve de modifications techniques. © OKW Enclosures Ltd